



**Installation Guide**  
**2006-2007 Suzuki GSXR**  
**600/750**



Congratulations on the purchase of your new TaylorMade underbelly exhaust kit for your GSXR. Your new exhaust is fabricated from thin wall stainless steel so it will never rust. The black finish is a baked on ceramic coating and only requires washing with soap and water to keep clean.

Any competent mechanic with basic tools can install the kit but if you have any doubts in your mechanical abilities entrust installation to an experienced workshop. Time to fit is approximately 1 - 2 hours depending on familiarity.

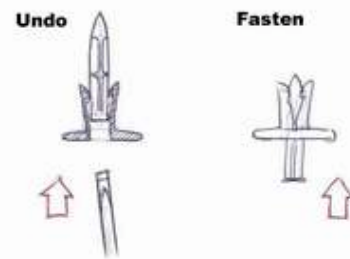
**All directions are given as if you are sat on the bike: e.g. left = gear change side.**

Fitting is straightforward but please do read the instructions carefully, as they will help you get the job done quicker and more easily.

### **Stage One - Disassembly**

1) Remove right hand fairing lower:

a) in the lower surface of the bottom, front of the fairing are 3 plastic fasteners. Remove the center fastener by first, pulling the center down to disengage then grab the outside and pull out completely. Remove the R/H fastener by first pushing in the center as shown in the picture to the right. Rotate metal clip located on the inside until fairing lower is released



b) remove 2 plastic fasteners from inside fairing nose

c) remove 3 bolts along the top edge of the fairing panel and the single bolt at the back

d) pull the fairing panel off the bike noting that there are three push in hooks located as shown to the right

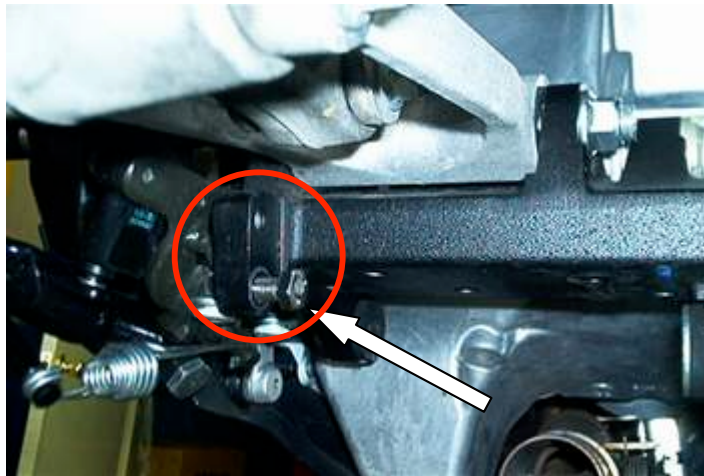


- 2) Remove mounting bolt from rear of L/H fairing panel
- 3) Remove stock muffler:
  - a) remove mounting bolt from R/H side
  - b) remove 2 mounting bolts from L/H side
  - c) release clamp at front of muffler
  - d) pull muffler off headers

**\*\*\*IMPORTANT!!! THIS NEXT STEP IS CRUCIAL TO PROPER FITMENT\*\*\***

**Failure to properly install your muffler strap will void your warranty!**

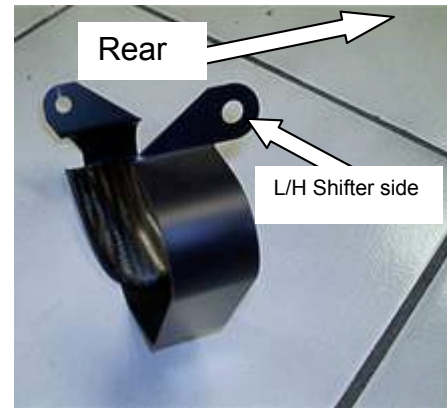
- 4) Remove L/H rear muffler mounting bracket (2 x allen head bolts).
- 5) Thread M8 x 25 hex head bolt into lower, threaded hole of L/H, rear muffler mounting frame tab and tighten.



**NOTE:** This bracket **MUST** be removed in order to properly fit the muffler hanger strap. Improper installation of the strap will cause premature muffler failure!

## Stage Two – Assembly

- 1) Push your new TaylorMade muffler fully home over the outlet stub of the headers. A little, light oil smeared over the slip joint will ease the mounting of the muffler.
- 2) Check that the muffler body is horizontal.
- 3) Identify the L/H side of the muffler hanger. Push the hole in the tab over the protruding threads of the bolt you just installed in the L/H, rear muffler mounting frame tab and thread on a washer and M8 nyloc.
- 4) Stretch the muffler hanger over the muffler and locate the R/H mounting tab on the inside of the stock R/H muffler mount. Push one of the stock muffler mounting bolts through the stock mounting tab, through the hanger tab and thread on a washer and M8 nyloc.
- 5) Check that the muffler is horizontal then tighten the mounting bolts.
- 6) Tighten muffler clamp onto the headers.
- 7) Slip the trim piece inside the rear wings of the fairing lowers until the mounting holes line up. Refit stock mounting bolts to attach both the fairing lowers and trim piece to chassis.
- 8) Attach rear of trim piece to bracket on rear of muffler using M6 x 10 button head bolt.



Now, stand back and take a moment to admire the results of all your hard work. All that remains is to fire her up and go for a spin.

**After running the bike for approximately 100 miles go over all fasteners and check for tightness.**

If you experience any problems with the fitment of your TaylorMade Exhaust components or these instructions, the technicians at TaylorMade will be pleased to help. Just give us a call.

Safe Riding,  
Paul Taylor

## **WARRANTY AND LIMITATIONS**

Regarding products sold by TaylorMade Racing Inc. (TaylorMade) e.g., exhaust systems, composites, billet parts, etc., TaylorMade warrants these products against defects arising out of failure due to material and/or workmanship for a period of 1 year from the date of purchase regardless of actual "in service" date. This warranty is limited to the repair or replacement of the item solely at the discretion of TaylorMade. Such repair or replacement will be determined based solely on TaylorMade's Evaluation of the item's intended and actual use.

Regarding products purchased from TaylorMade but not manufactured by TaylorMade, NO WARRANTIES WHATSOEVER are granted or implied. Any and all claims regarding items sold by TaylorMade but not manufactured by TaylorMade are to be referred to and disposed of by the actual manufacturer. Claims regarding these items may be administered by TaylorMade or referred to the actual manufacturer at TaylorMade's discretion.

### **EXCLUSIONS**

This warranty does not cover finished such as plating and paint and their failure due to discoloration from heat or weathering or abuse. Nor does it cover any failure due to damage arising out of improper installation, crash damage or incompatibility with other components, In any event, TaylorMade accepts no liability for any damage to vehicles or persons arising out of the use and/or abuse of a vehicle equipped with TaylorMade components, nor will TaylorMade accept liability for damage to injury or persons from the use or abuse of the product itself, whether direct or indirect, voluntary or involuntary. TaylorMade will not be responsible for any dispositions made by dealers or distributors of products. TaylorMade will not be responsible for any labor charges incurred by the customer for the installation or removal of the TaylorMade component or changes arising out of the collateral damage to the vehicle or persons while installing, removing, or using any item purchased from or supplied by TaylorMade whether manufactured by TaylorMade or not.

### **RETURN POLICY**

TaylorMade will not be responsible for any shipping charges by the purchaser in returning the part to TaylorMade for evaluation. A return authorization number and a copy of the purchaser's invoice or receipt must accompany all returns. Parts returned without authorization may be refused.

### **DISCLAIMER**

**TAYLORMADE EXHAUST SYSTEMS, ENGINE PARTS, OR ANY PART WHICH MAY AFFECT EMISSION REGULATION COMPLIANCE ARE FOR OFF HIGHWAY USE ONLY AND ARE NOT FOR SALE OR USE ON CALIFORNIA POLLUTION CONTROLLED VEHICLES OR IN OTHER STATES WHERE POLLUTION CONTROL LAWS APPLY.**

**SUITABILITY OF APPLICATION IS THE SOLE RESPONSIBILITY OF THE PURCHASER**

15941 Arminta Street Van Nuys California 91406

Tel: 818 781 8123

**RACETAYLORMADE.com**